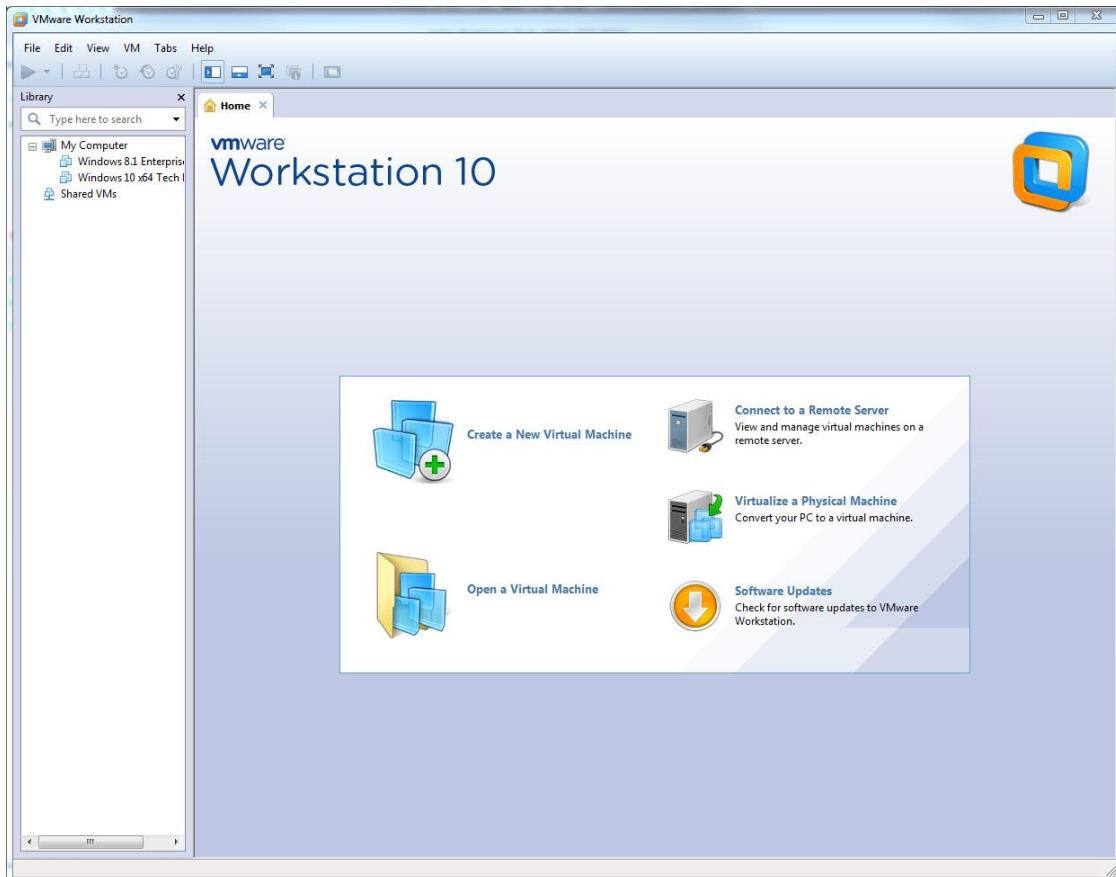


How to create a virtual machine using MSDNAA ISO file

1. Open VMWare Workstation and make sure you are on the Home tab
2. Click on **'Create a New Virtual Machine'**

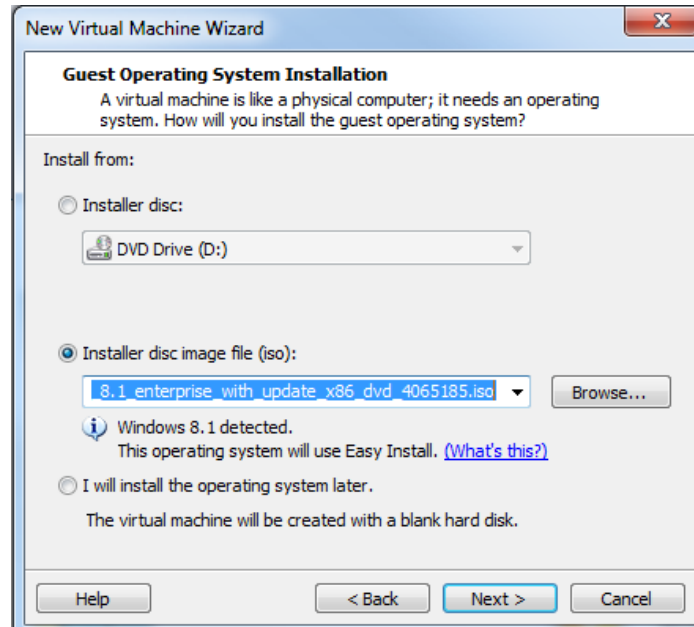


3. In the New Virtual Machine Wizard dialog box, make sure Typical (recommended) is selected and click **'Next'**

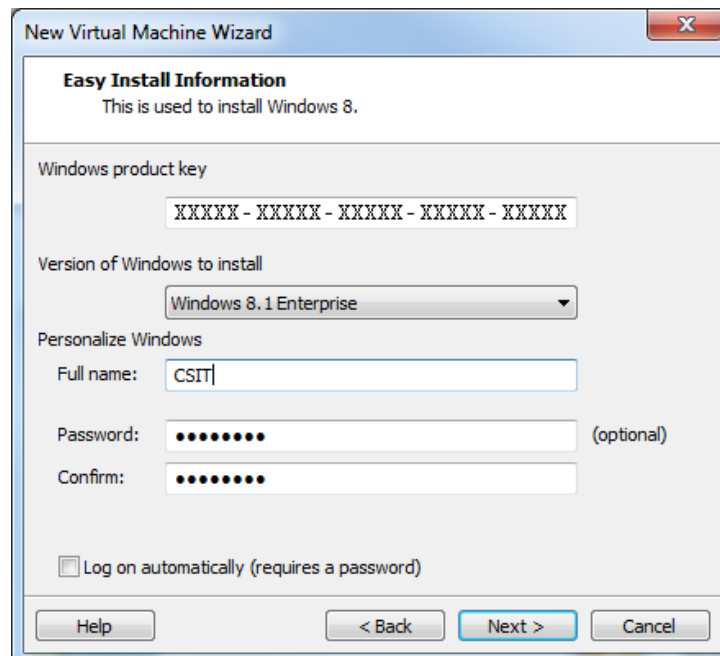


How to create a virtual machine using MSDNAA ISO file

4. In the Guest Operating System Installation dialog box, click on **'Installer disc image file (iso)'** and then click **'Browse'**
5. Navigate to the location the ISO disc image file you downloaded from MSDNAA. Highlight the ISO file in the Browse for ISO image dialog box and click **'Open'**. Then click **'Next'**

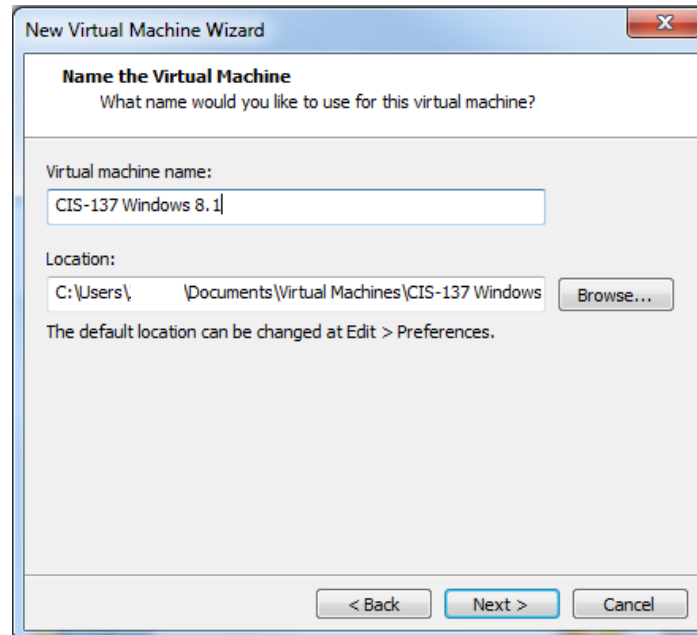


6. In the Easy Install Information dialog box, enter the product key for the operating system you are installing from your MSDNAA account, provide a username, and provide a password if desired and click **'Next'**

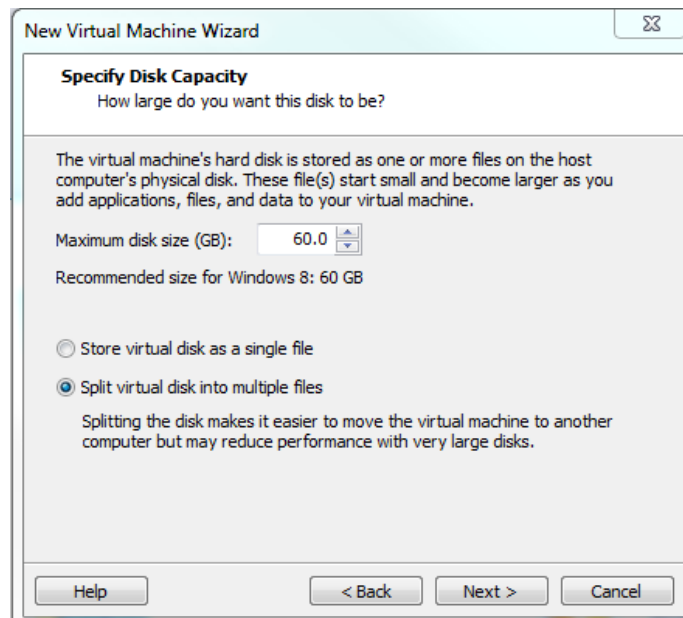


How to create a virtual machine using MSDNAA ISO file

7. In the Name the Virtual Machine dialog box, give the virtual machine a unique name and click **'Next'** (You may also choose to save the virtual machine to a location other than the default)

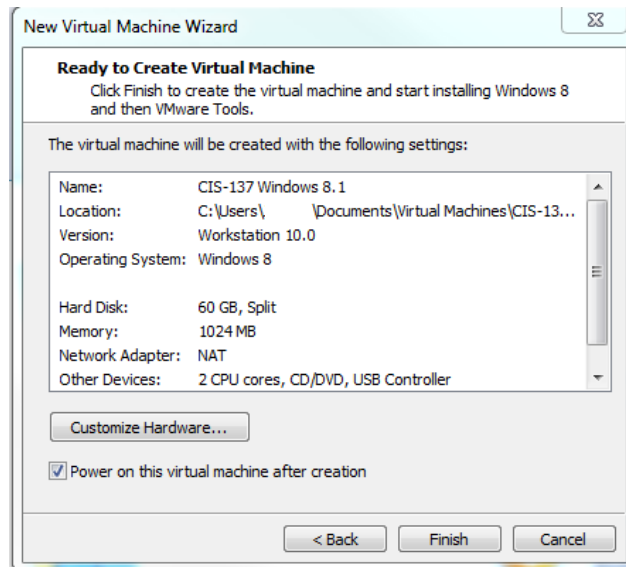


8. In the Specify Disk Capacity dialog box, accept the default settings and click **'Next'**

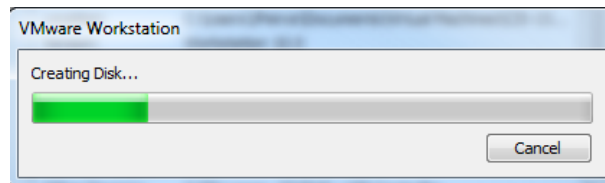


How to create a virtual machine using MSDNAA ISO file

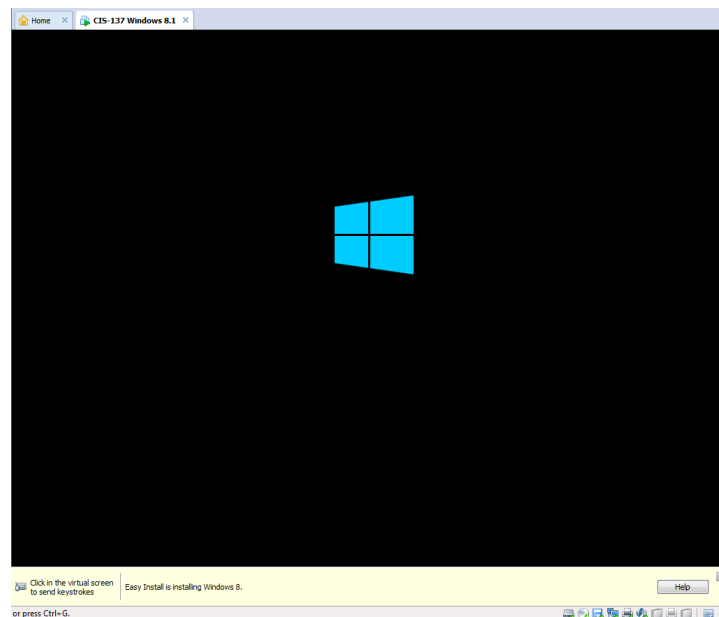
9. In the Ready to Create Virtual Machine dialog box, make sure Power on this virtual machine after creation is selected and click **'Finish'**



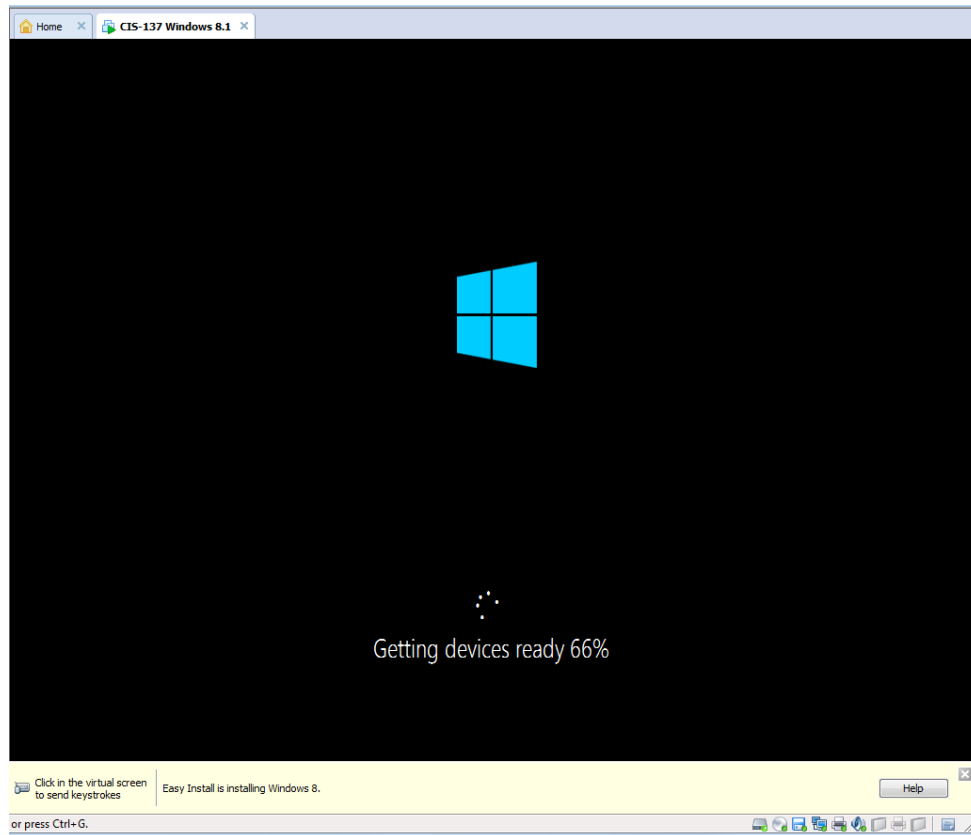
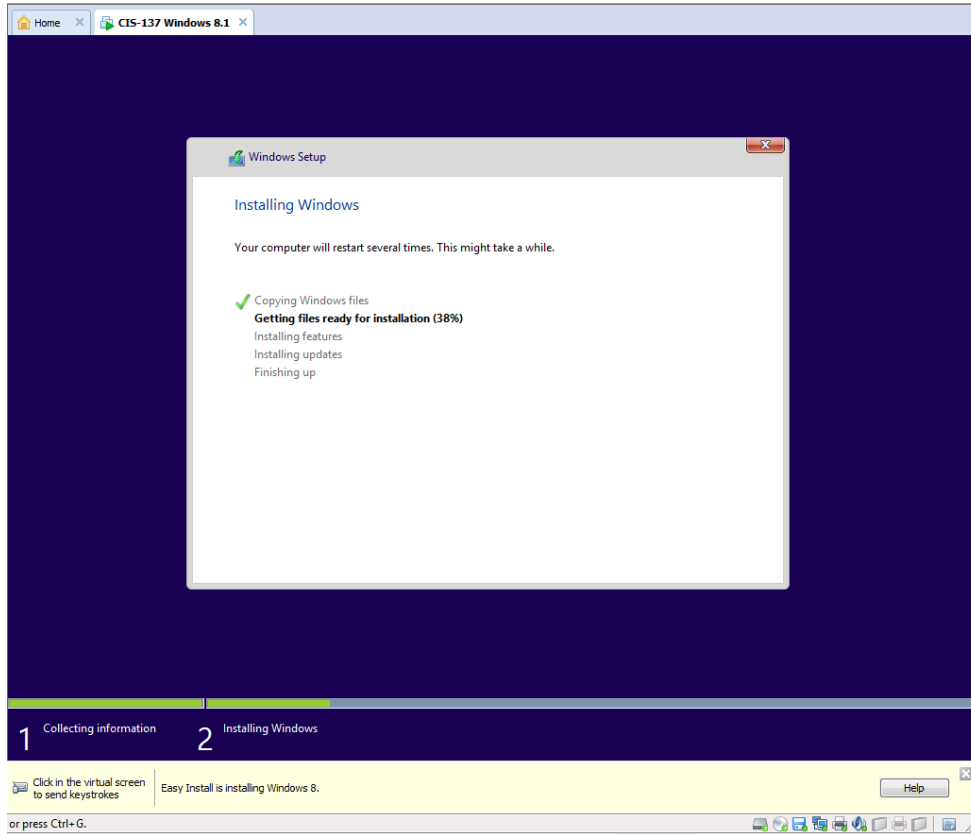
10. The hard disk for the new virtual machine will begin to be created.



11. Once this has completed the virtual machine tab will open & the VM will boot and start the operating system installation.

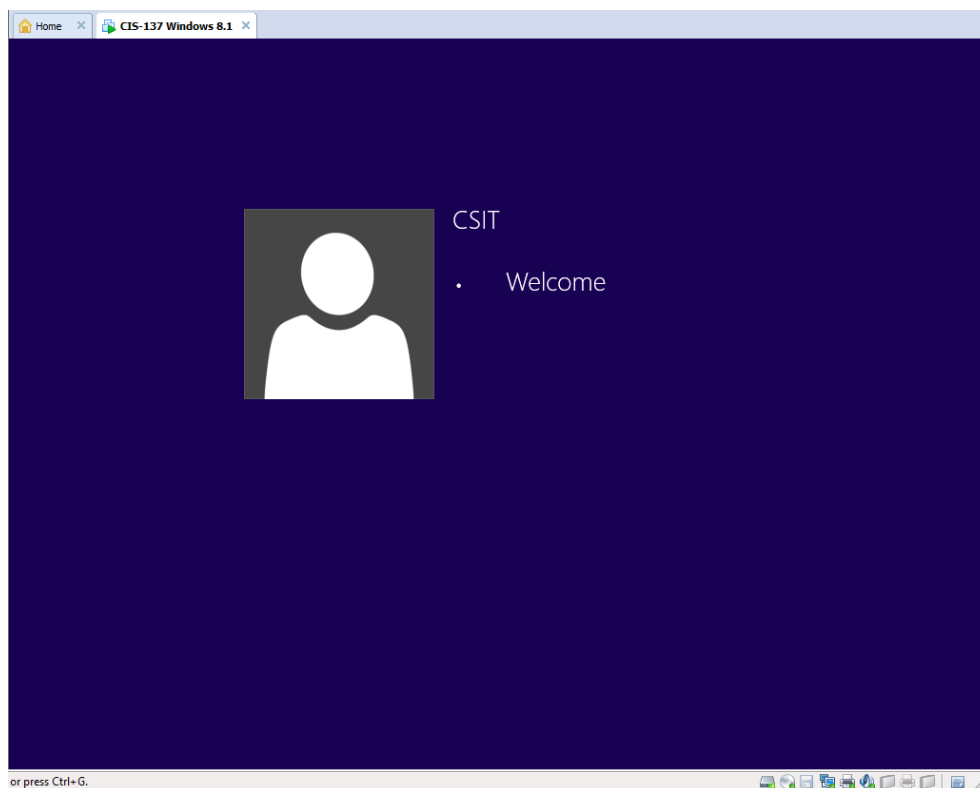
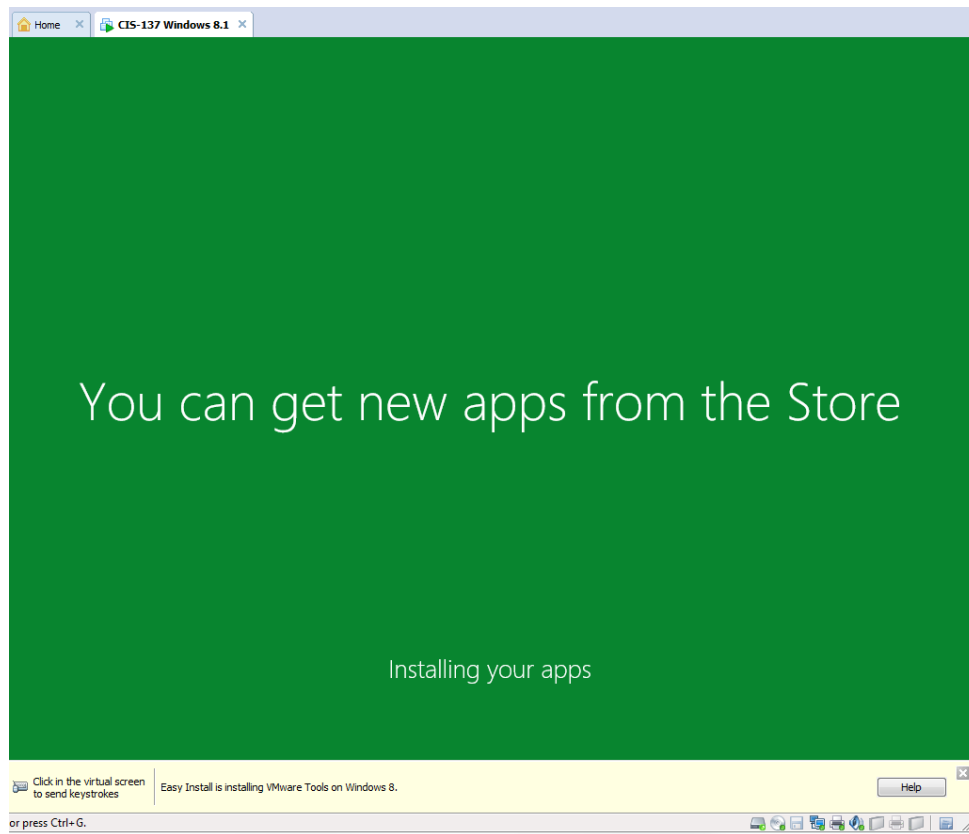


How to create a virtual machine using MSDNAA ISO file



How to create a virtual machine using MSDNAA ISO file

12. The virtual machine may restart during the installation process.



How to create a virtual machine using MSDNAA ISO file

13. Once the operating system installation is complete, the virtual machine is ready to go. You may now use this virtual machine for your class homework & labs.

